

# Working With the PalmOS Emulator

## Installing Applications for use in the PalmOS Emulator

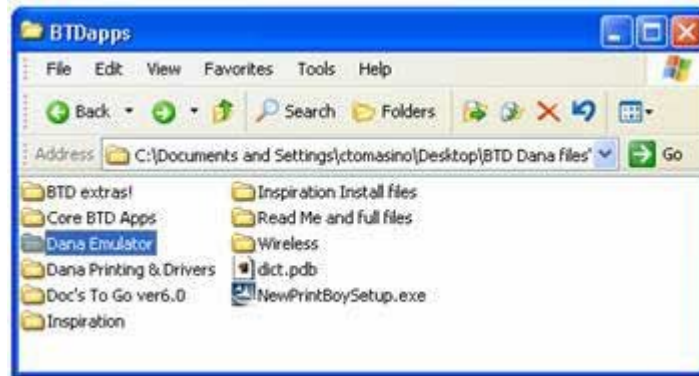
To install individual applications for use within the Palm OS Emulator right-click on the Palm OS Emulator screen and select Install Application/Database. Locate the prc and/or pdb files to install. Tap the application in the the Palm OS Emulator to run.



Note: Sometimes the application does not appear at first in the application window on the Palm OS Emulator. The window needs to "refresh" for the application to appear. Use the scroll bar to scroll down/up to refresh the screen and then locate the application.



## Autoloading Applications in the PalmOS Emulator



Palm OS applications can be made available each time the Palm OS Emulator is run.

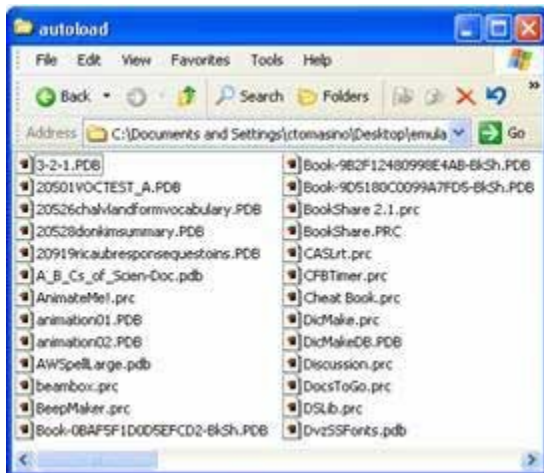


To make the applications available when the Palm OS Emulator starts create a folder called autoload within the same directory as the Palm OS Emulator executable file.



Any prc/pdb files located in the autoload

folder will be automatically installed when Palm OS Emulator opens.



Note: A number of prc/pdb files can be placed into the autoload folder, however, Palm OS Emulator RAM determines how many of the applications will be active. The more applications placed in the autoload folder the more time it takes the Palm OS Emulator to open. If many prc/pdb files are needed, consider creating multiple folders with multiple copies of the Palm OS Emulator, creating an autoload folder in each.

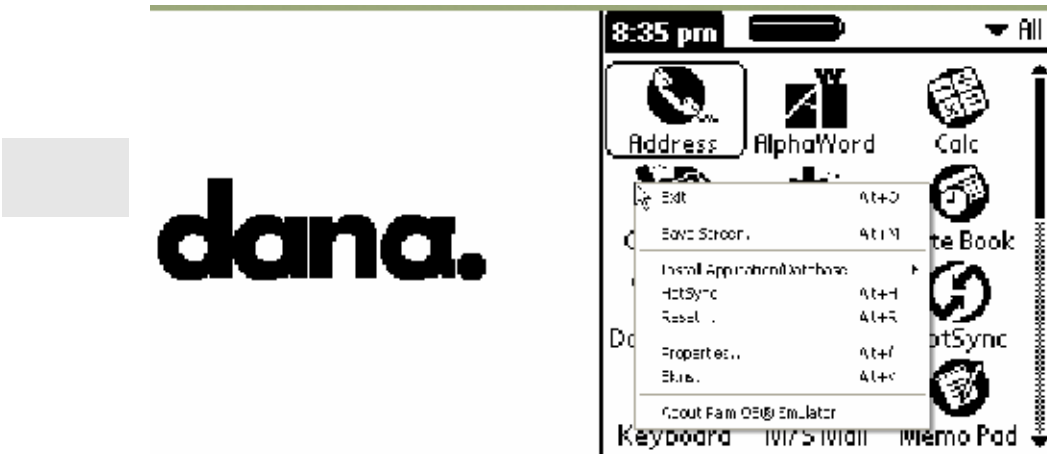
## Running an application when PalmOS Emulator Starts

If it is desired that an application opens when the Palm OS Emulator starts, create an autorun folder in the same directory as the Palm OS Emulator and place the prc/pdb file(s) in this folder. When the Palm OS Emulator opens the application will open and be ready to use.



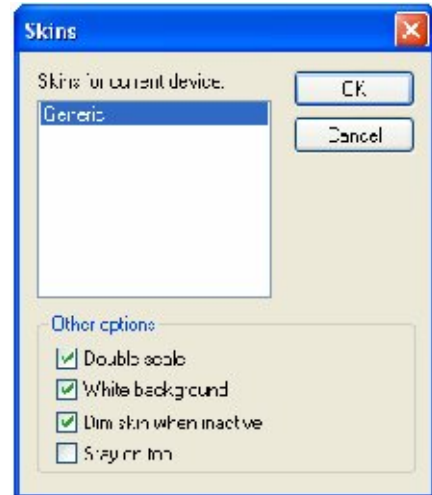
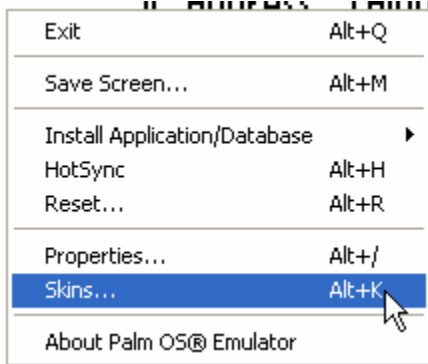
## Working with POSE Emulator Settings

Open the POSE emulator exe from the computer. Right-clicking the Emulator window brings up the POSE Emulator menu selections.



## Changing the Size of the Emulator Window

From the Menu select Skins. Toggle the size of the Emulator window with the Double Scale checkbox.



## Quitting the POSE Emulator

From the POSE Emulator menu select Exit to close the Emulator application.